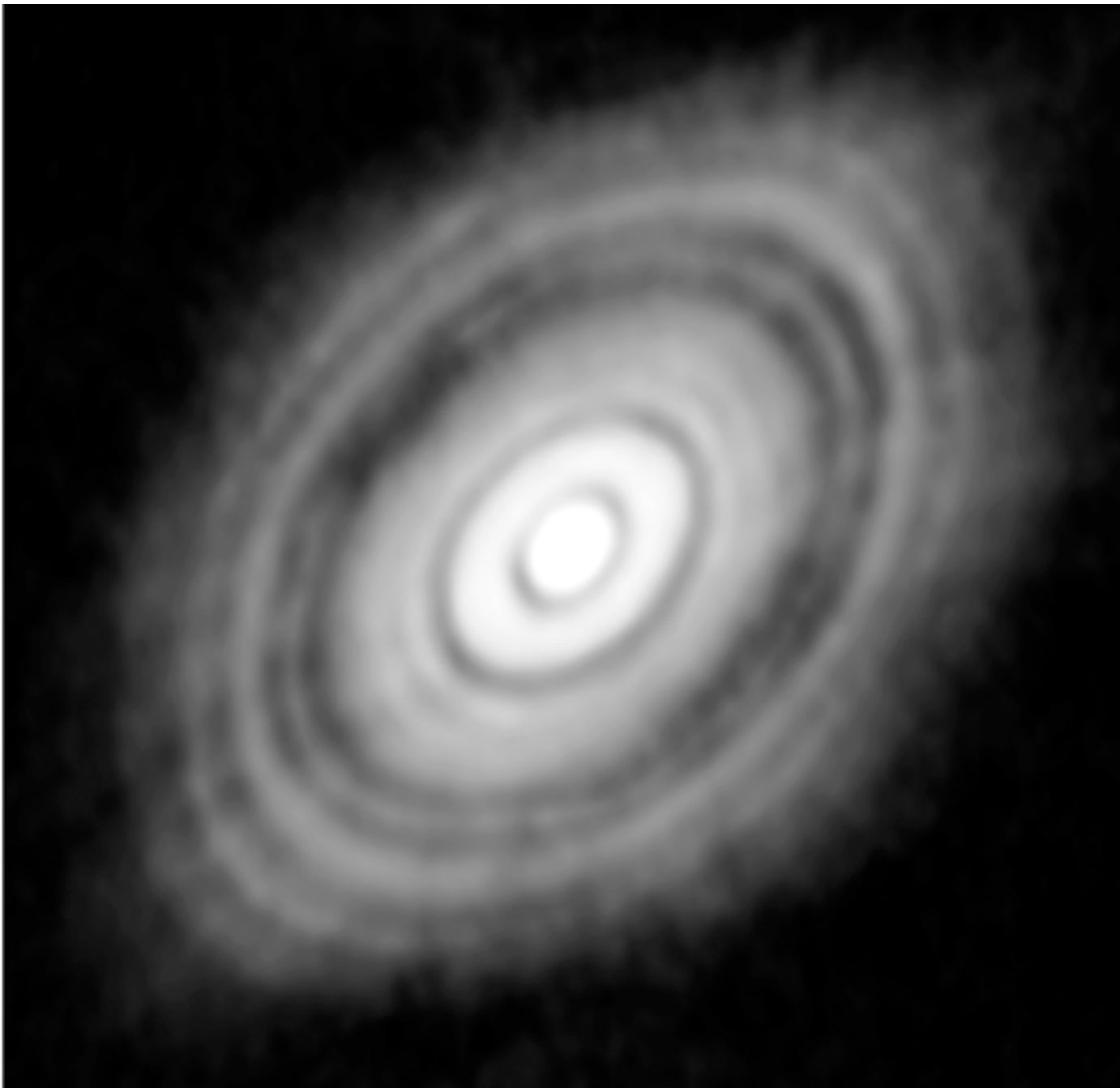

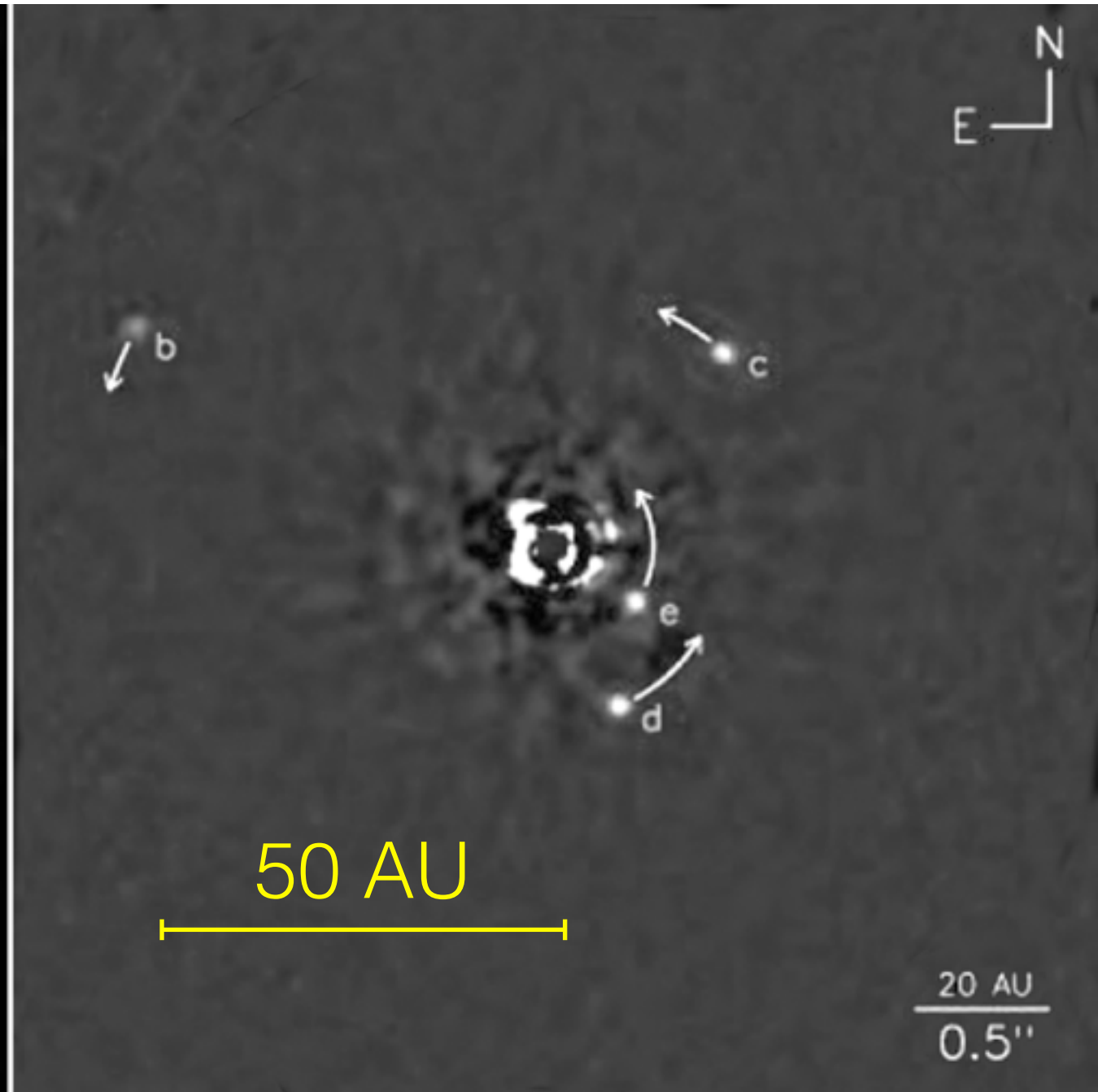


Maoz Figure 6.3

100 AU



HL Tauri @ $\lambda=1.28\text{mm}$



HR 8799 @ $\lambda=3.7\mu\text{m}$

PRL 4
(1960)
337

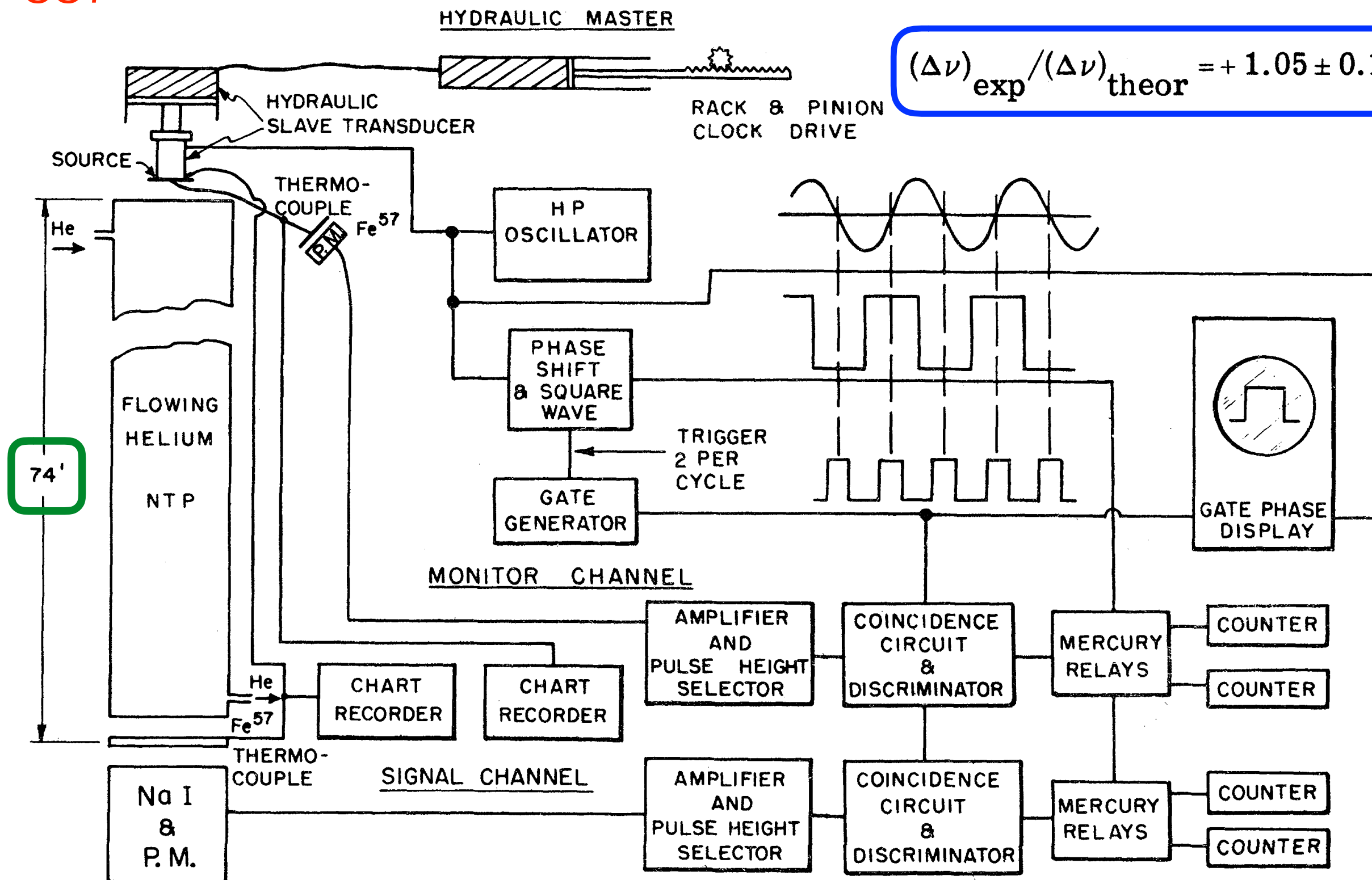
APPARENT WEIGHT OF PHOTONS*

R. V. Pound and G. A. Rebka, Jr.

Lyman Laboratory of Physics, Harvard University, Cambridge, Massachusetts

(Received March 9, 1960)

$$(\Delta\nu)_{\text{exp}} / (\Delta\nu)_{\text{theor}} = +1.05 \pm 0.10$$



Images from HubbleSite.org

