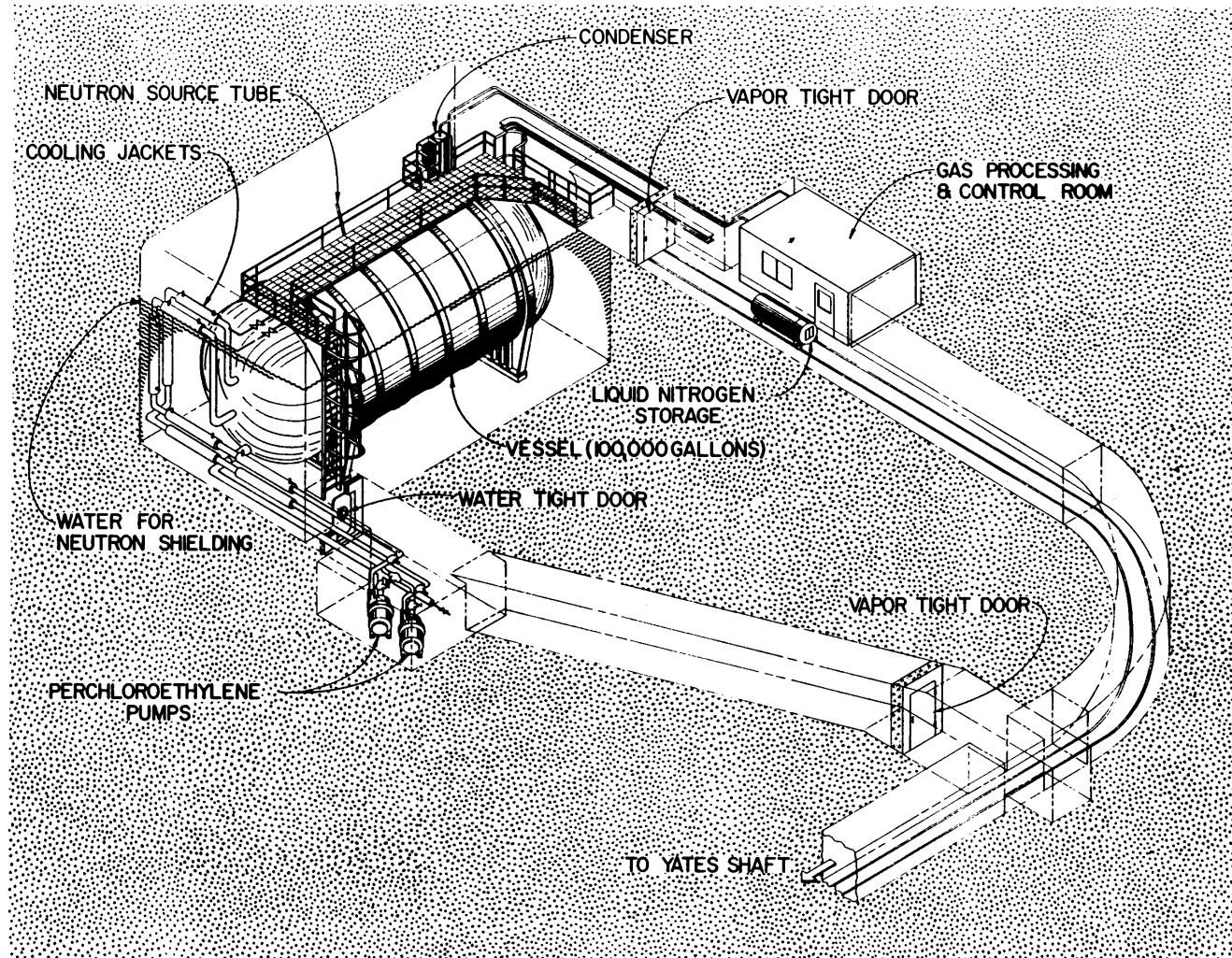


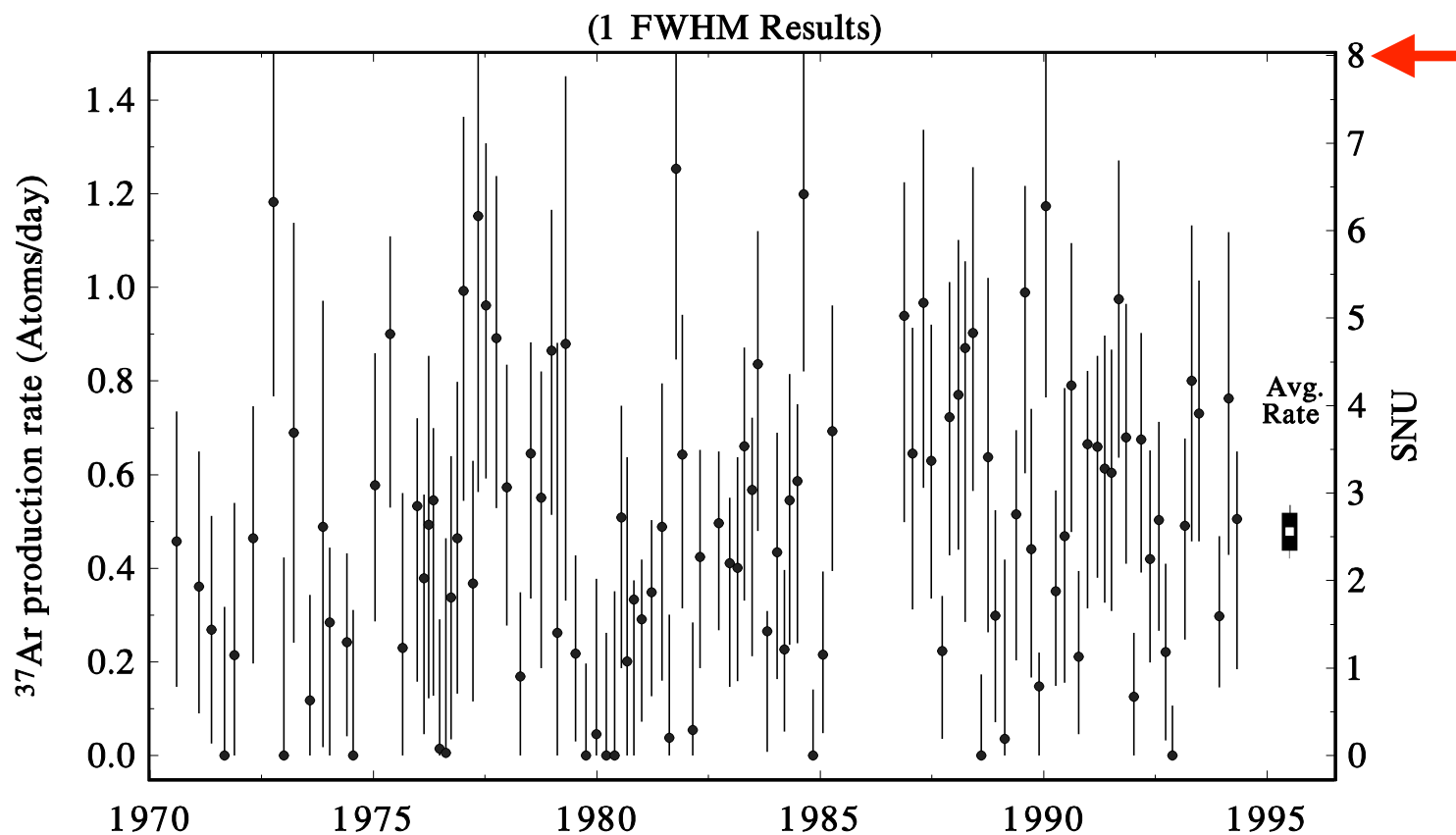
Experiment

Cleveland, Daily, Davis, et al.
Astroph Journal 496 (1998) 505

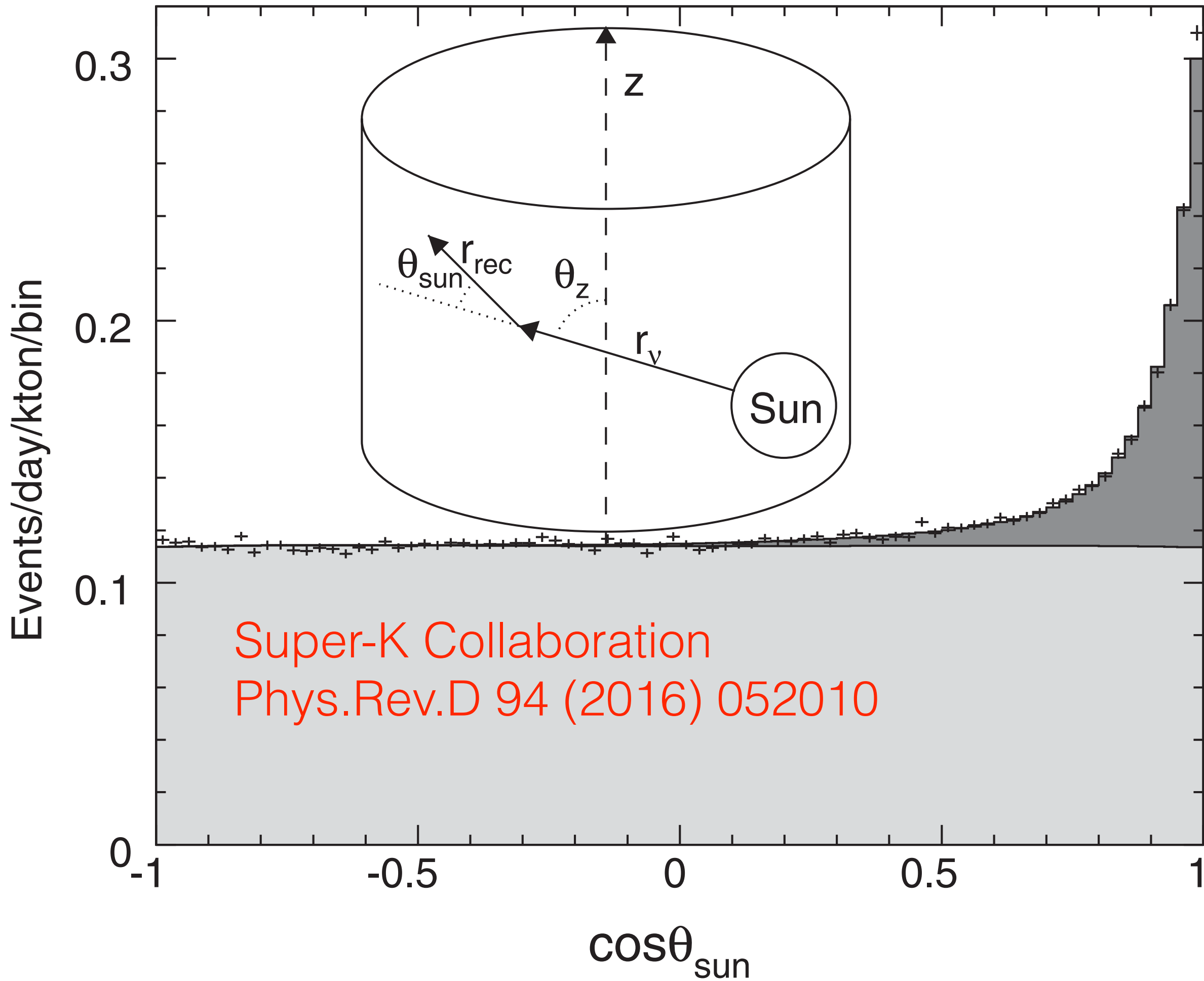


Calculation

Bahcall & Pinsonneault
Rev Mod Phys 64 (1992) 885



Neutrino source	CI (SNU)
<i>pp</i>	0.0
<i>pep</i>	0.2
${}^7\text{Be}$	1.2
${}^8\text{B}$	6.2
${}^{13}\text{N}$	0.1
${}^{15}\text{O}$	0.3
Total	8.0 ± 3.0



Total Rates: Standard Model vs. Experiment

Bahcall-Pinsonneault 2000

