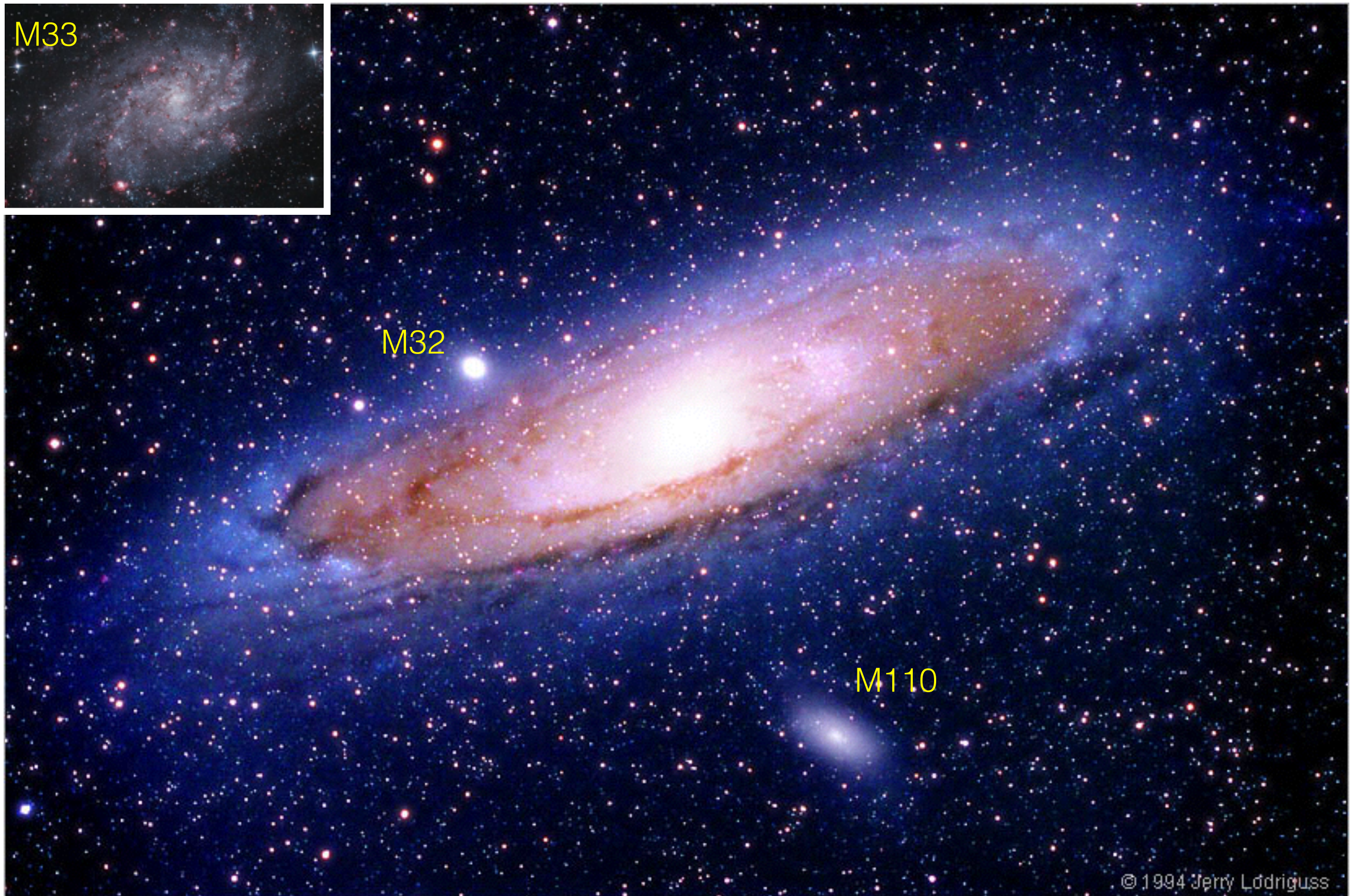
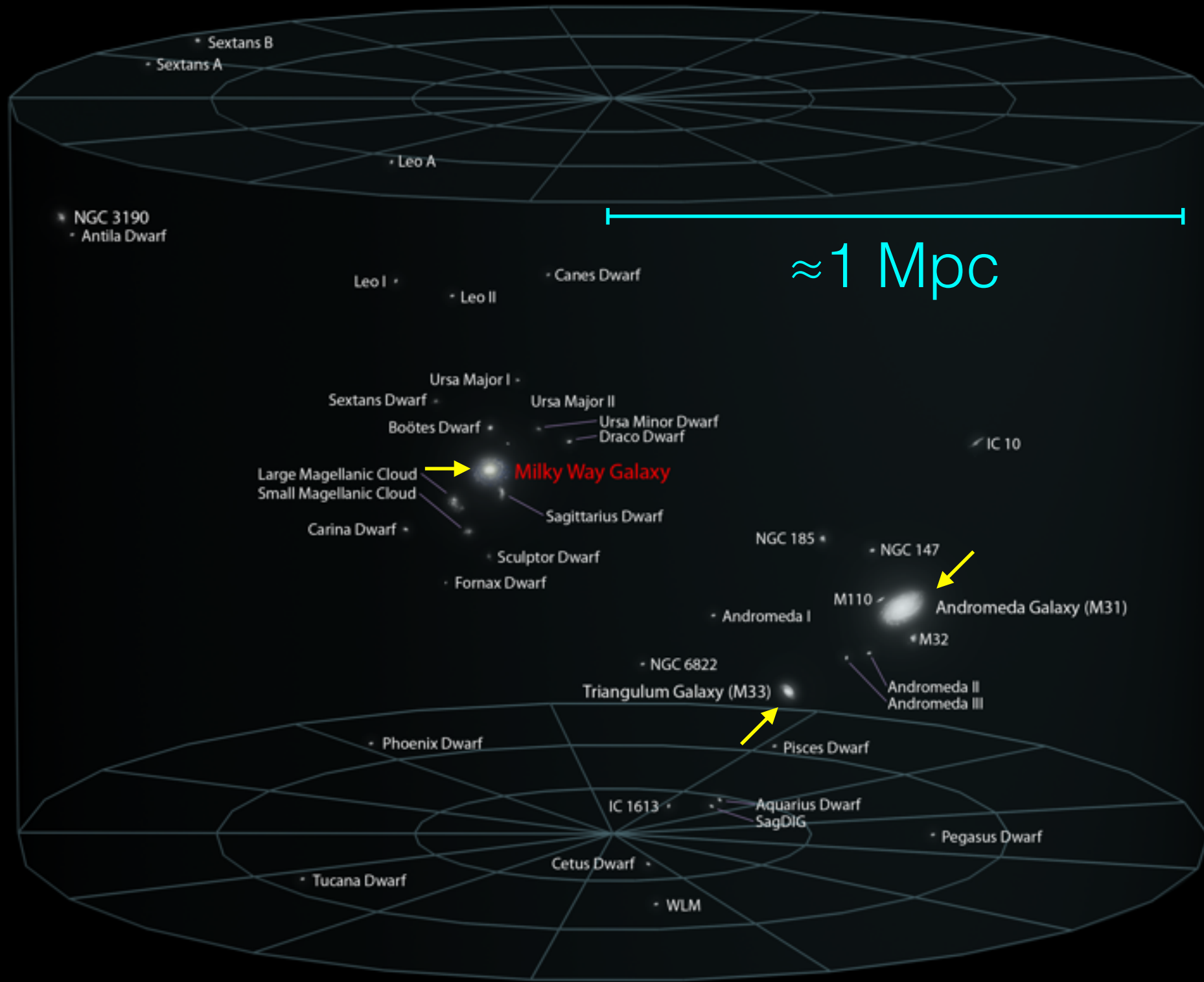


The Andromeda Galaxy M31: 0.8 Mpc away

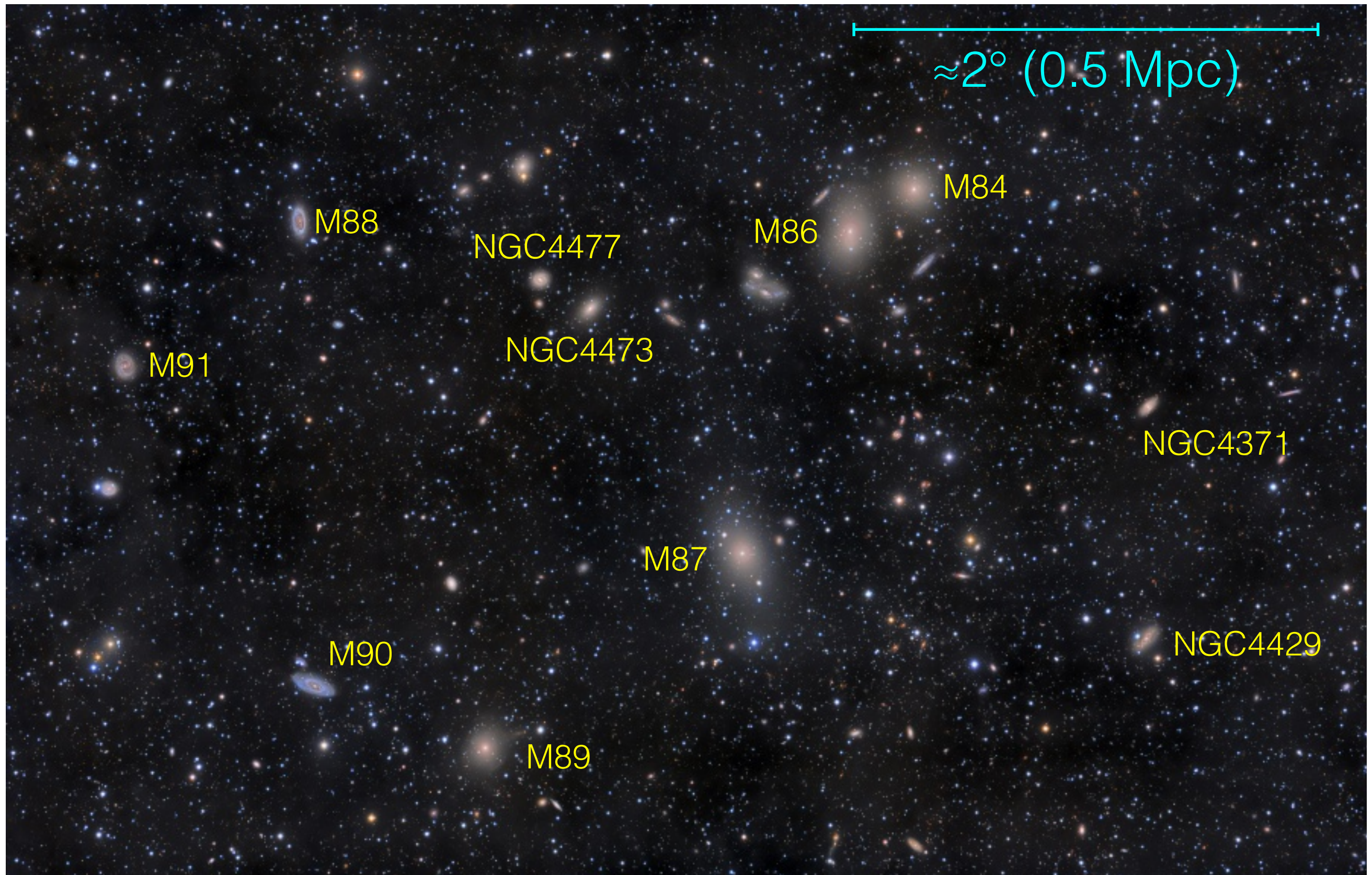


Local Galactic Group



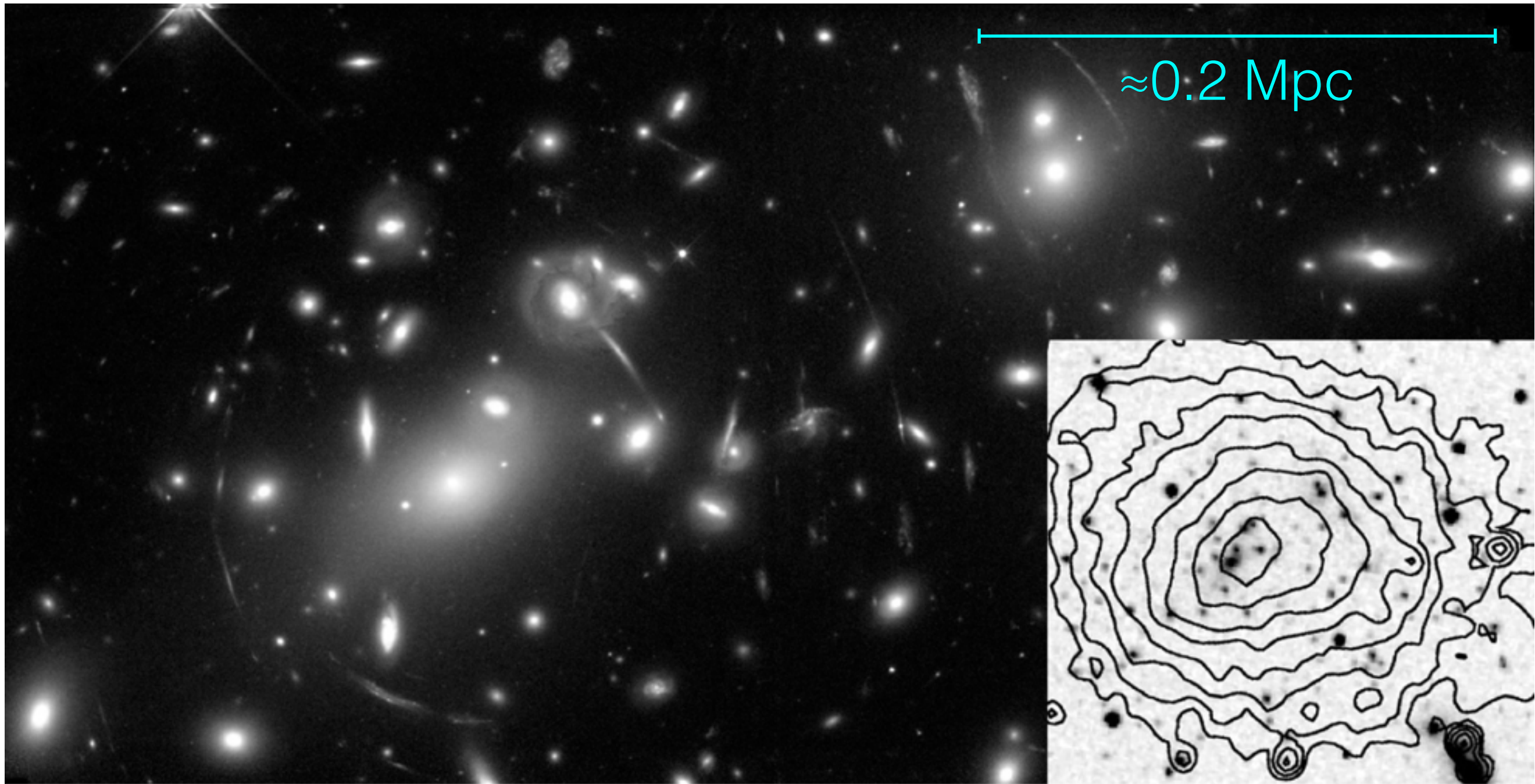
→ The three large members

The Virgo CLUSTER: 16 Mpc away



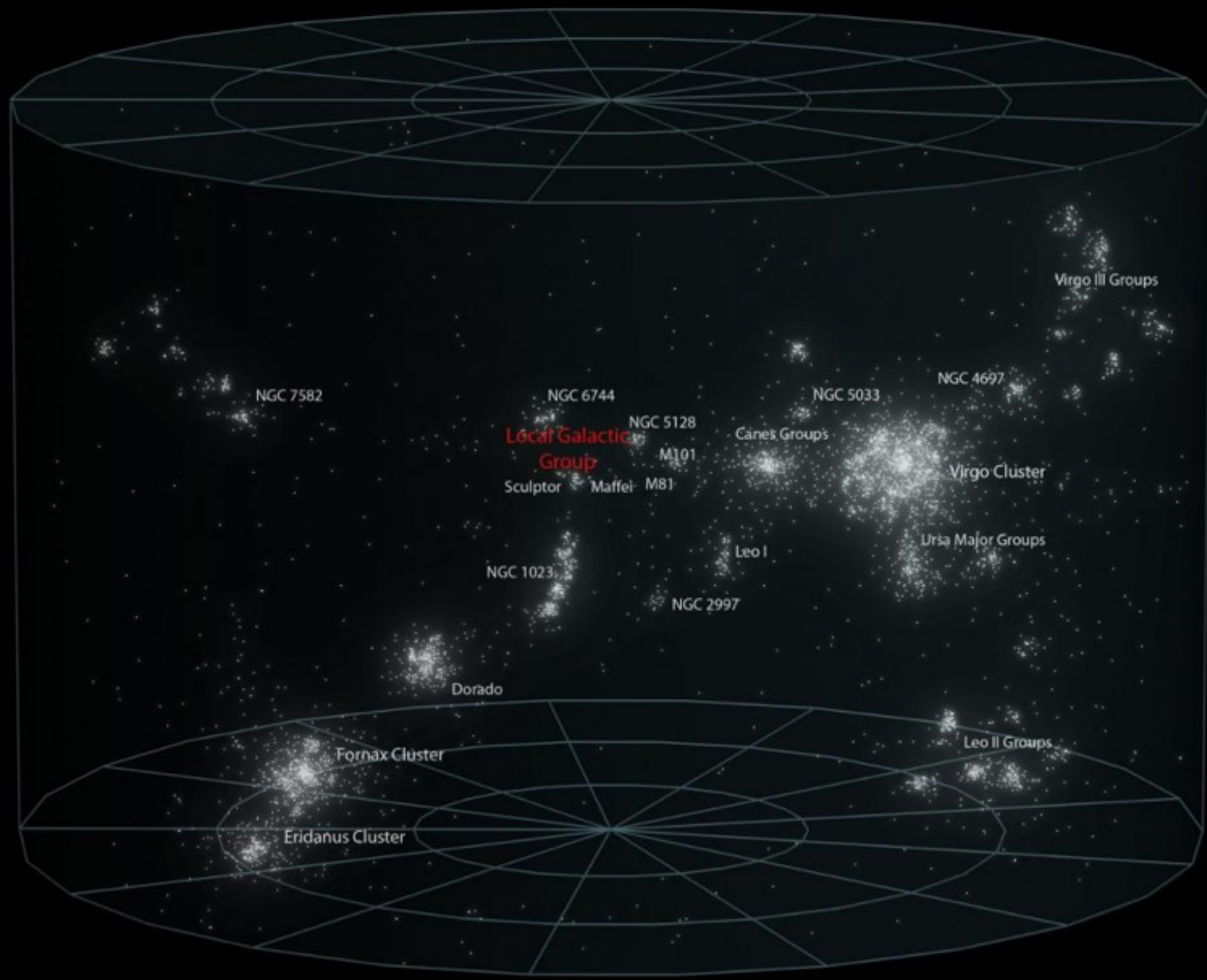
Galaxy Cluster Abell 2218:
Gravitational lensing of a distant cluster

Maoz
Figure 7.14

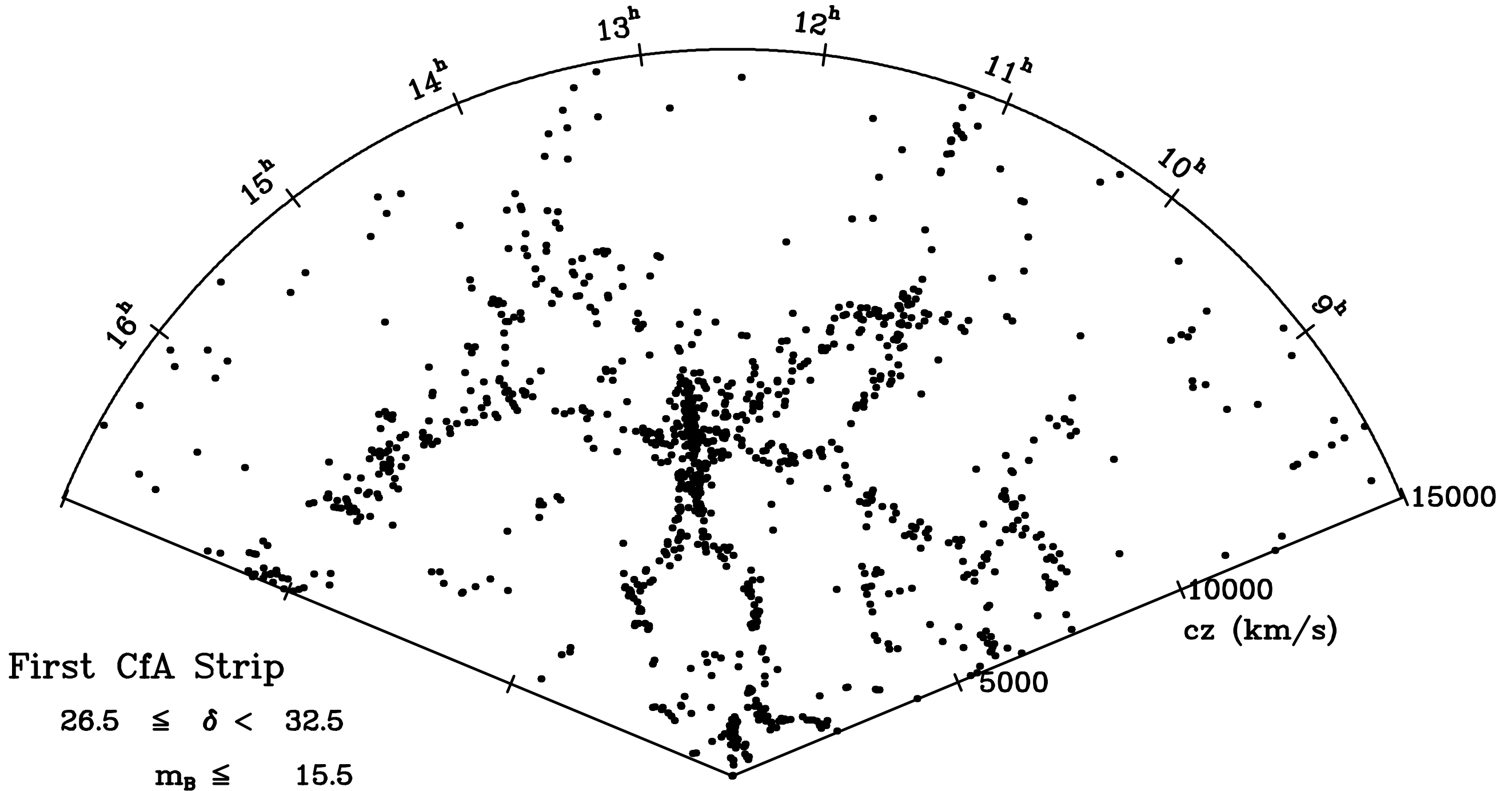


X-Rays

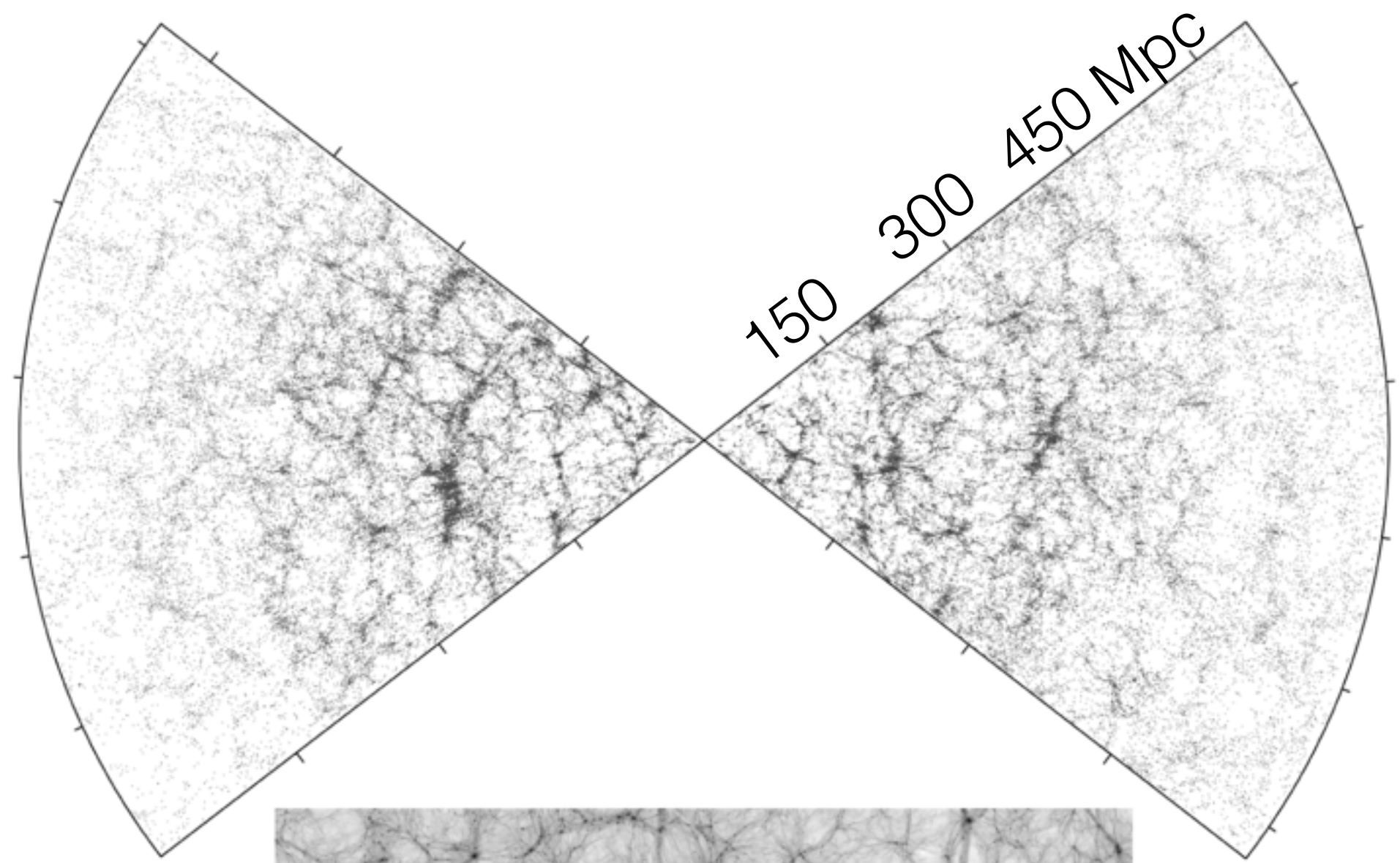
Virgo Supercluster



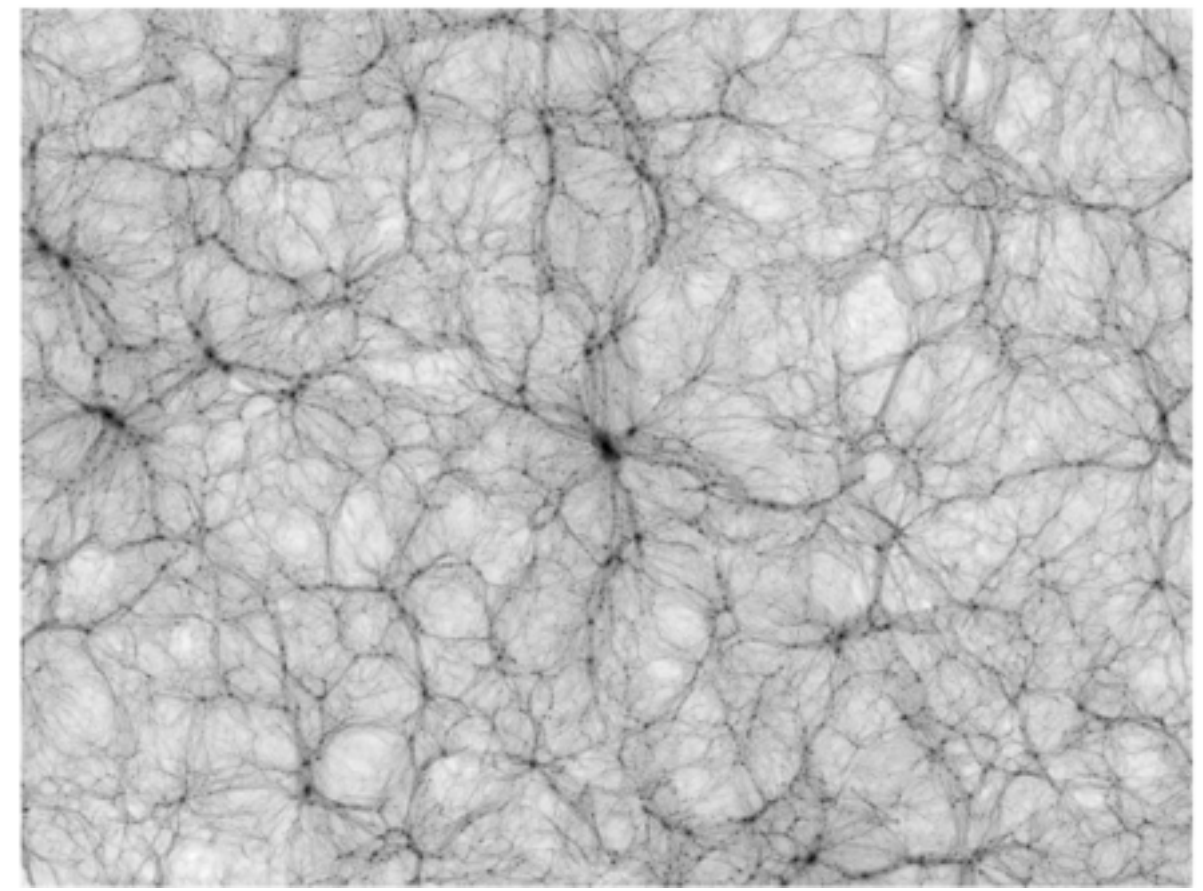
“A Slice of the Universe”



Maoz
Figure 7.15



Data



Simulation

<http://wise2.ipac.caltech.edu/staff/jarrett/2mrs/2mrs.html>

